

10 YEARS WARRANTY

STRATO®



STRATO®

CEMENT TEXTURE & VELOURS



EDITION
1.2



Matte & smooth

INTERIOR TEXTURED PAINTS

10 YEARS WARRANTY



Free
Product
Training

For All Industry
Professionals
suzuka.com.my/career-training

WALL FINISH
PROFESSIONALS.

SINCE
1977

Grab & Win!
iPad Pro
Check out our contest!
suzuka.com.my/promotion | T&C Apply



suzuka.com.my

[f](#) [@](#) [suzuka.group](#) [+6012-258 7388](#)

All images included in this catalog are for visual reference only. Actual product may have a slight color difference due to variations in printing processes or digital viewing settings. We suggest you examine actual product samples before ordering.



STRATO SCT & SVL-E1.2-2606



STRATO®

Matte & smooth



1

STRATO® CEMENT TEXTURE

Page 3 - 12

2

STRATO® VELOURS

Page 13 - 26



STRATO®

INTERIOR TEXTURED PAINT



Elevate your walls—and your peace of mind—
with our newly launched **10-year warranty**
on Strato textured paint

Designed to deliver long-lasting character and unmatched durability, this warranty reflects our confidence in the **premium quality** of our paint.

What it Covers?

Protection against **peeling, cracking, and fading**, ensuring your finish remains vibrant and intact for a **full decade**.

Why it Matters?

Textured finishes transform ordinary surfaces into statement features. With this warranty, you can enjoy that rich, tactile aesthetic worry-free — **no frequent touch-ups or repairs needed**.

A hassle-free, protected investment in your space — offering both **visual appeal** and **reliable performance**.

Create two different patterns with
SCT or SVL using different tools and techniques!



Trowel Pattern

Application
with trowel.



Piccolo Pattern

Application with
piccolo tool.

STRATO CEMENT TEXTURE



Create everlasting look with Strato® Cement Texture. Whether you are going for the industrial, scandinavian, contemporary or minimalistic style, the backdrop of the cement texture can complete the look.

Create two different patterns with Strato® Cement Texture using different tools and techniques!

Appearance

Low Sheen ●●●●● High Sheen

Smooth Texture ●●●●● Rough Texture

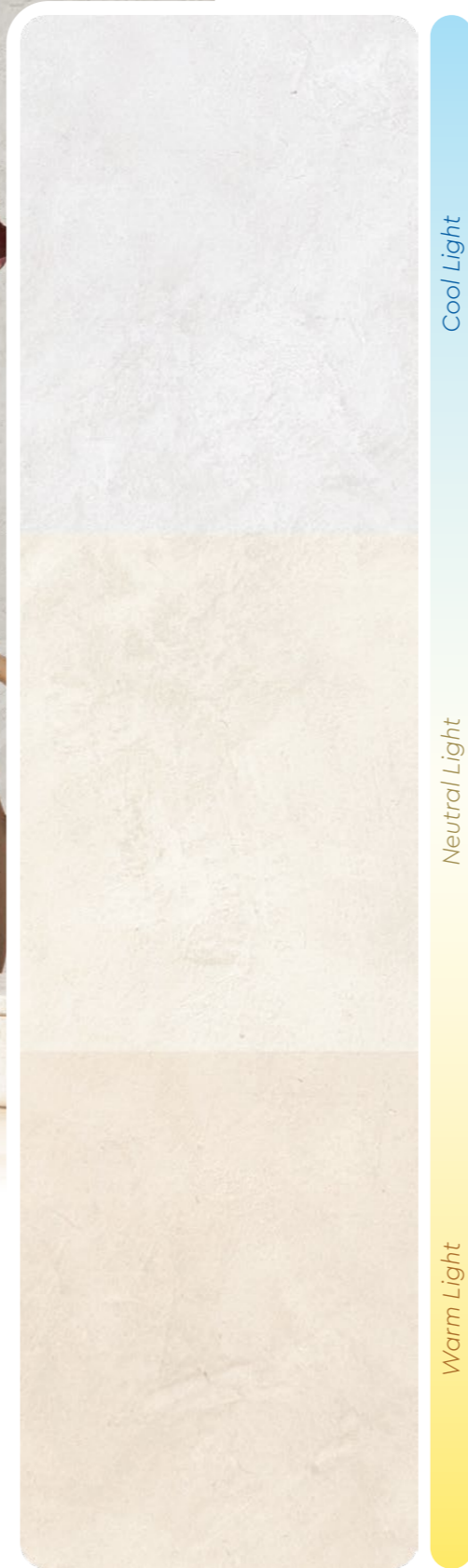
Matte ●●●●● Metallic

Complies to the

- Singapore Green Label
- American California Proposition 65
- LEED, U.S. Green Building Council Standards

Features

Low VOC & Odor	Green Choice, Water Based & Eco-friendly	Anti-chalking & Efflorescence	For the Interior
Formaldehyde & Lead Free	Easy Application & DIY Friendly	Crack Resistant	Matte Finish
Easy to Touch Up	Easy Maintenance	Applicable on Ceiling	



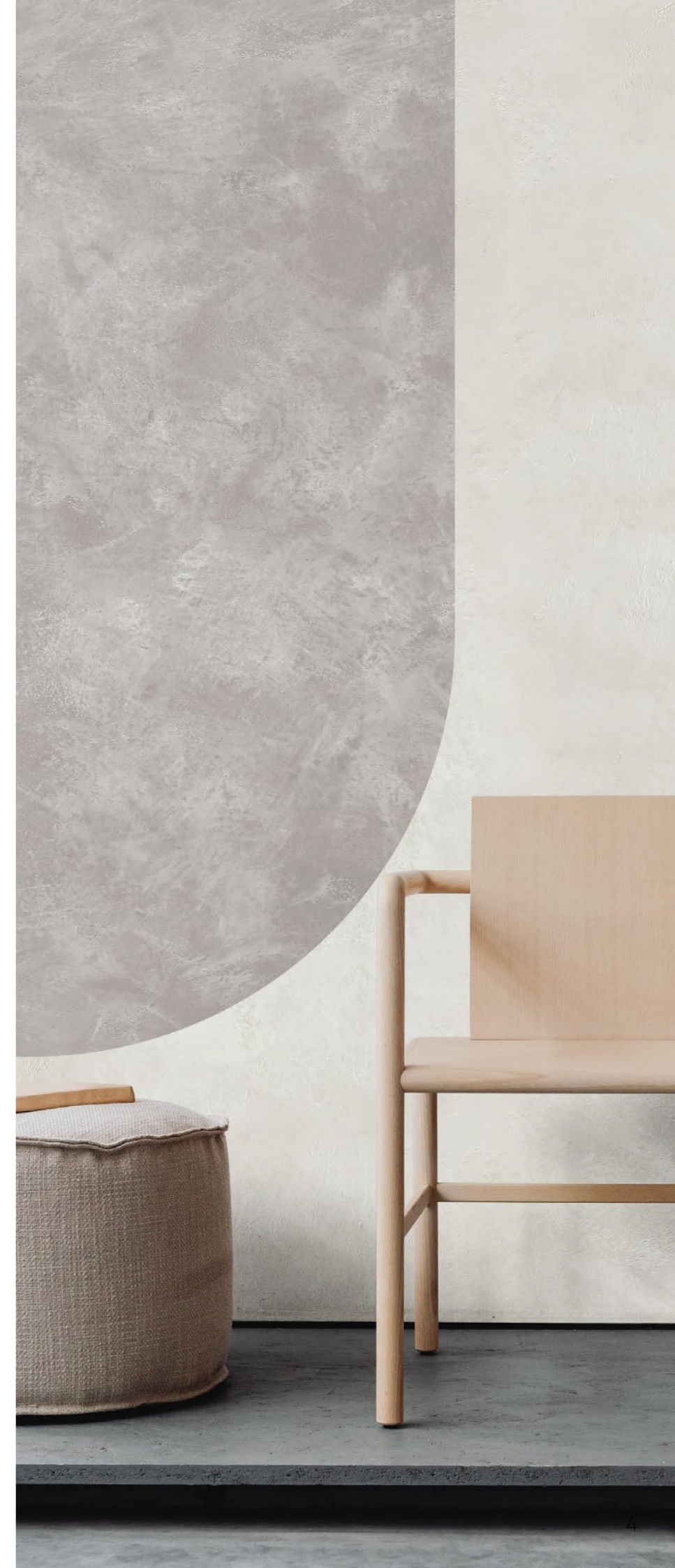
Cool Light

Neutral Light

Warm Light

Lighting Color Influence

Lighting color dramatically influences how a paint color appears by adding a layer of color to the surface, altering its perceived warmth, coolness, and vibrancy.



SCT
**Trowel
 Pattern**

Matte & Smooth
 Finishing.



SCT-301 Silver Grey



SCT-302 Natural Grey



SCT-303 Shark Grey



SCT-304 Granite Grey



SCT-305 Iron Grey



SCT-306 Charcoal Grey



SCT-307 Metal Grey



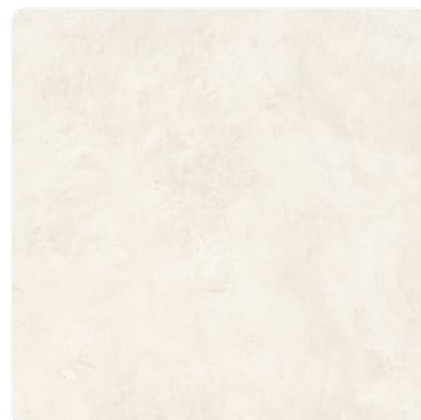
SCT-308 Shadow Grey



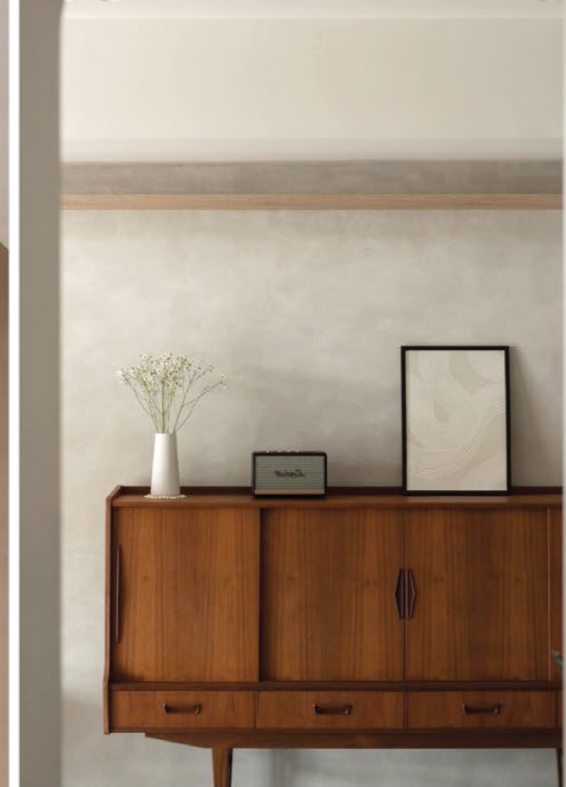
SCT-309 Ashes Grey



SCT-310 Misty Grey



SCT-311 Dove White



SCT-309 Ashes Grey



SCT-302 Natural Grey



SCT-305 Iron Grey



SCT | Trowel Pattern

Application Instructions

Preparation:

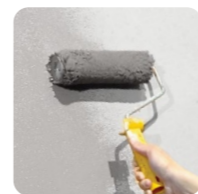
- Surface shall be dry and free from dirt, oil, grease and foreign matters.
- Surface unevenness, cracks or any defects shall be repaired & treated.

IMPORTANT:

Color may vary on application technique & amount of material used.

Dilution Guide:

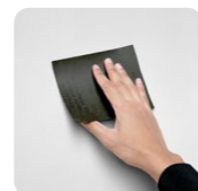
Primer : Max 3% of clean water
Texture : Do not dilute.



1 Primer

Roll 2 layers of primer on the entire surface. Allow 30 minutes to dry between the layers. (The primer can be diluted with maximum 3% of clean water)

Tool: Roller



2 Sanding

Sand surface with sandpaper (600 grit) to ensure a smooth surface.

Tool: 600 Grit Sand Paper



3 Texture Coat

Scrape texture coat randomly to create pattern. Ensure the whole surface area is covered. Then apply second layer.

* Do Not Dilute the material.

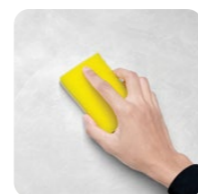
Tool: Stainless Steel Trowel



4 Sanding Optional

Sand surface with sandpaper (600 grit) to ensure a smooth surface.

Tool: 600 Grit Sand Paper

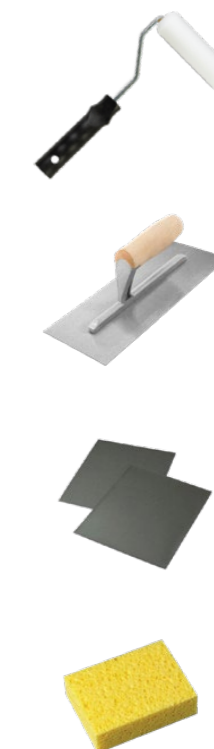


5 Topcoat

Apply SR-Top 1 on entire surface using a dry sponge in circular motions.

IMPORTANT: Use a clean and dry sponge/cleaning cloth to wipe the excess topcoat before it dries to avoid the sponge marks.

Tool: Sponge / Cleaning Cloth



Recommended Tools:
Roller, Stainless Steel Trowel, Sand Paper (600 Grit), Sponge.



PACKING

Packing	Material	Coverage / set (±5%)
2.5L set	1L Primer	6 - 7 sqm (Wall) 5 - 6 sqm (Ceiling)
	1L Texture Coat	
	0.5L Topcoat (SR-Top 1)	

SCT
**Piccolo
 Pattern**

Matte & Smooth
 Finishing.



SCT-301 Silver Grey



SCT-302 Natural Grey



SCT-303 Shark Grey



SCT-304 Granite Grey



SCT-305 Iron Grey



SCT-306 Charcoal Grey



SCT-307 Metal Grey



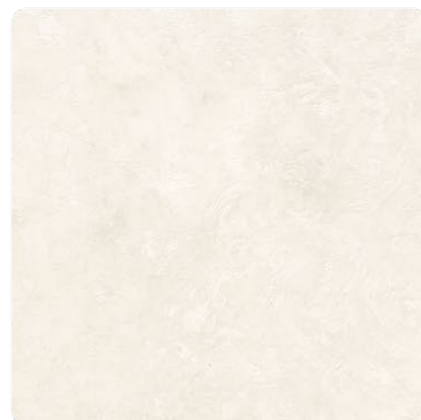
SCT-308 Shadow Grey



SCT-309 Ashes Grey



SCT-310 Misty Grey



SCT-311 Dove White



SCT-302 Natural Grey



SCT-306 Charcoal Grey



SCT-301 Silver Grey



SCT-309 Ashes Grey



SCT-304 Granite Grey



SCT | Piccolo Pattern

Application Instructions

Preparation:

- Surface shall be dry and free from dirt, oil, grease and foreign matters.
- Surface unevenness, cracks or any defects shall be repaired & treated.

IMPORTANT:

Color may vary on application technique & amount of material used.

Dilution Guide:

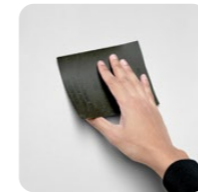
Primer : Max 3% of clean water
Texture : Do not dilute.



1 Primer

Roll 2 layers of primer on the entire surface.
Allow 30 minutes to dry between the layers.
(The primer can be diluted with maximum 3% of clean water)

Tool: Roller



2 Sanding

Sand surface with sandpaper (600 grit) to ensure a smooth surface.

Tool: 600 Grit Sand Paper



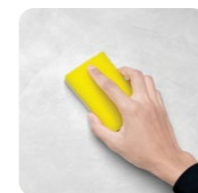
3 Texture Coat

(Do not dilute the texture coat with water or any solvents)

- (1) Scrape texture coat evenly onto the surface using a trowel.
- (2) Use piccolo tool to create swirl texture effects by moving with random circular motion.

Repeat the steps for a **second layer** to enhance the texture effects.

Tool: Stainless Steel Trowel & Piccolo Tool

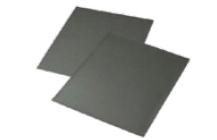


4 Topcoat

Apply SR-Top 1 on entire surface using a dry sponge in circular motions.

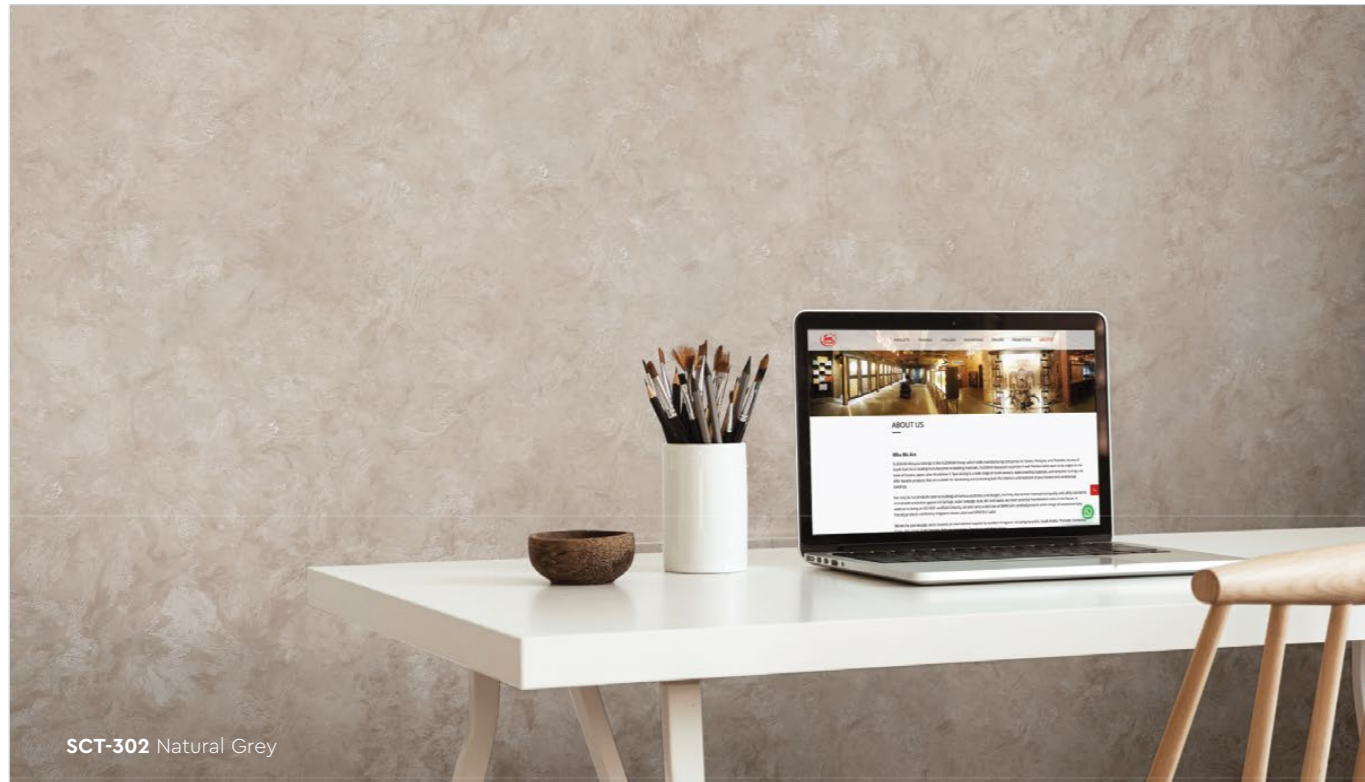
IMPORTANT: Use a clean and dry sponge/cleaning cloth to wipe the excess topcoat before it dries to avoid the sponge marks.

Tool: Sponge / Cleaning Cloth



Recommended Tools:
Roller, Piccolo Tool,
Stainless Steel Trowel,
Sand Paper (600 Grit), Sponge.

SCT-302 Natural Grey



PACKING

Packing	Material	Coverage / set (±5%)
2.5L set	1L Primer	6 - 7 sqm (Wall) 5 - 6 sqm (Ceiling)
	1L Texture Coat	
	0.5L Topcoat (SR-Top 1)	

STRATO VELOURS



Rich velvety layers of color to enhance the interior space. Each color brings out a different mood and ambience, find a color that matches your personality.

Create two different patterns with Strato® Velours using different tools and techniques!



Appearance

Low Sheen ●●●●● High Sheen

Smooth Texture ●●●●● Rough Texture

Matte ●●●●● Metallic

- Complies to the
- Singapore Green Label
 - American California Proposition 65
 - LEED, U.S. Green Building Council Standards

Features

Low VOC & Odor	Green Choice, Water Based & Eco-friendly	Anti-chalking & Efflorescence	For the Interior
Formaldehyde & Lead Free	Easy Application & DIY Friendly	Crack Resistant	Matte Finish
Easy to Touch Up	Easy Maintenance	Applicable on Ceiling	



Cool Light

Neutral Light

Warm Light

Lighting Color Influence

Lighting color dramatically influences how a paint color appears by adding a layer of color to the surface, altering its perceived warmth, coolness, and vibrancy.



SVL
Trowel Pattern

Matte & Smooth
 Finishing.



SVL-401 Cloudy Grey



SVL-402 Mushroom Beige



SVL-403 Hazel Wood



SVL-404 Summer Sahara



SVL-405 Walnut Leather



SVL-406 Brocade Blue



SVL-407 Deep Marine



SVL-408 Royal Denim



SVL-409 Violet Memory



SVL-410 Rosy Mauve



SVL-411 Frosted Mint



SVL-406 Brocade Blue

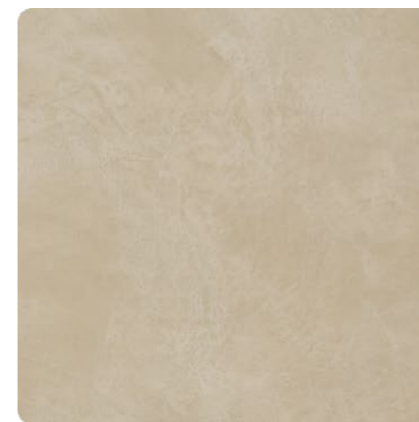


SVL-401 Cloudy Grey

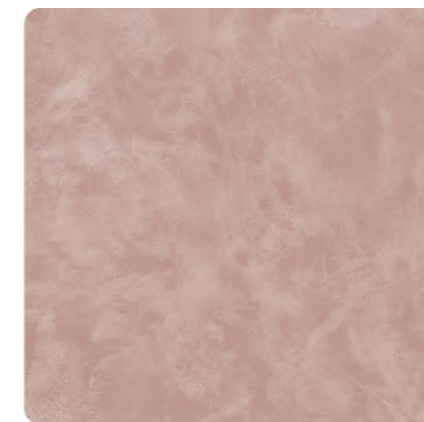


SVL-404 Summer Sahara

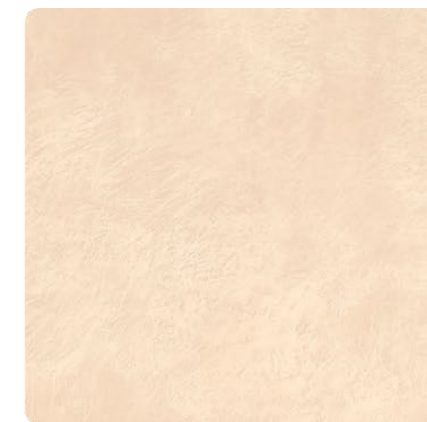




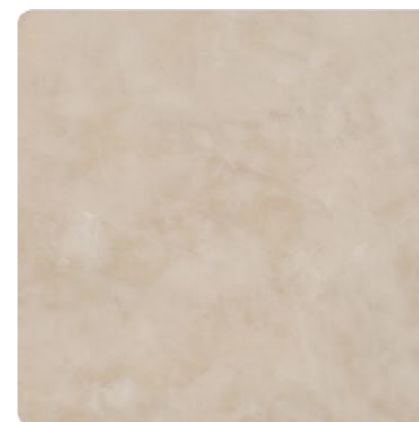
SVL-415 Lime Mist



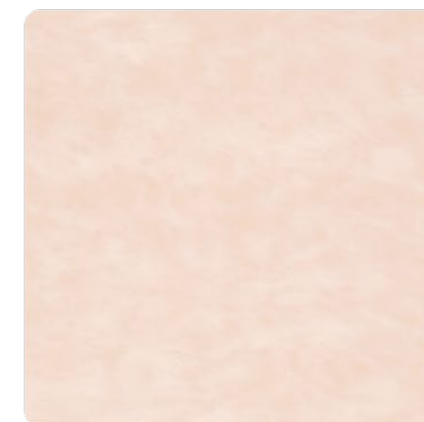
SVL-416 Flamingo Blush



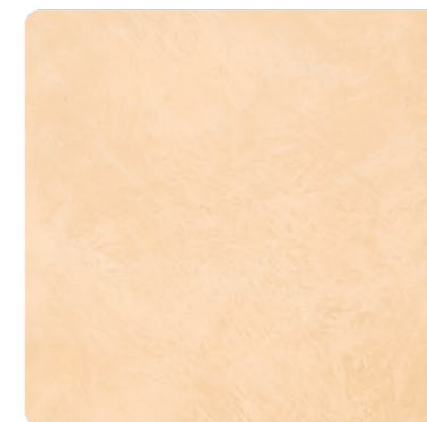
SVL-417 Vanilla Cream



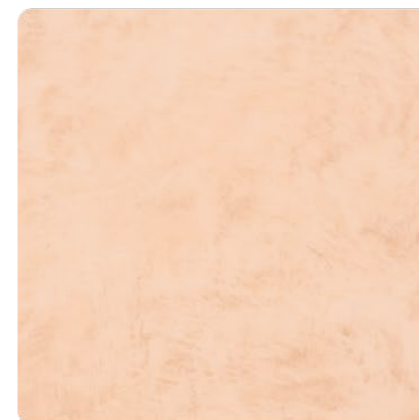
SVL-418 Oat Beige



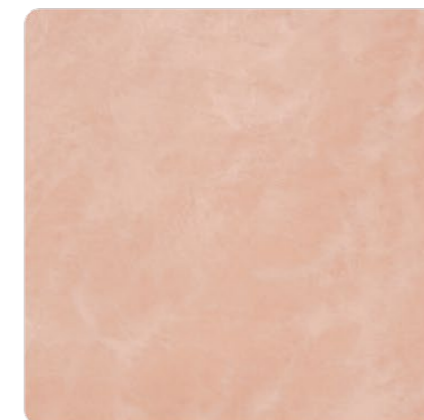
SVL-419 Blush Cream



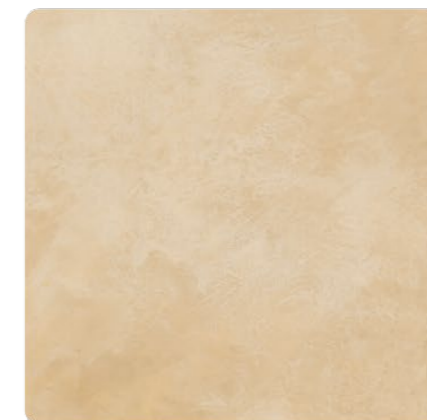
SVL-420 Wheat Beige



SVL-421 Light Apricot



SVL-422 Coral Peach



SVL-423 Lime Citrus



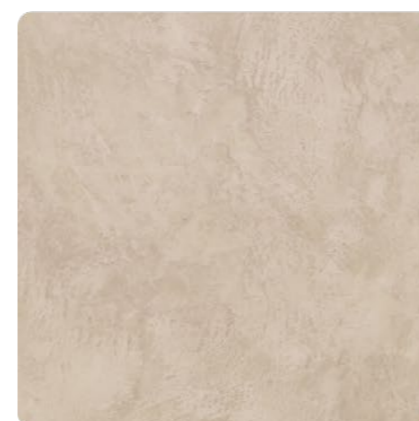
SVL-412 Vivid Emerald



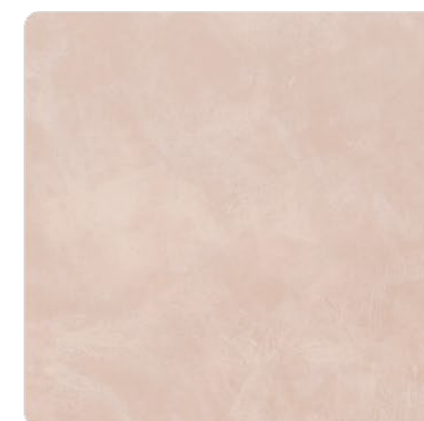
SVL-413 Hunter Green



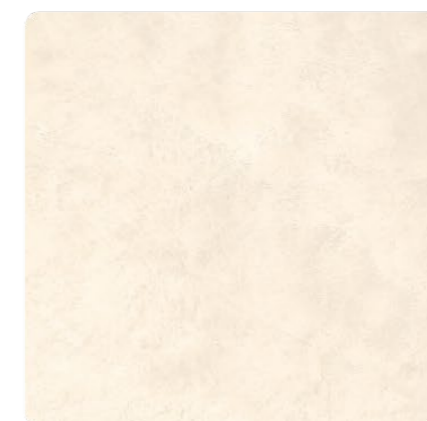
SVL-414 Herbal Garden



SVL-424 Dried Basil



SVL-425 Mauve Chalk



SVL-426 Dewy Ivory





SVL-412 Vivid Emerald



SVL-417 Vanilla Cream



SVL-410 Rosy Mauve



SVL | Trowel Pattern

Application Instructions

Preparation:

- Surface shall be dry and free from dirt, oil, grease and foreign matters.
- Surface unevenness, cracks or any defects shall be repaired & treated.

IMPORTANT:

Color may vary on application technique & amount of material used.

Dilution Guide:

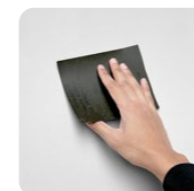
Primer : Max 3% of clean water
Texture : Do not dilute.



1 Primer

Roll 2 layers of primer on the entire surface. Allow 30 minutes to dry between the layers. (The primer can be diluted with maximum 3% of clean water)

Tool: Roller



2 Sanding

Sand surface with sandpaper (600 grit) to ensure a smooth surface.

Tool: 600 Grit Sand Paper

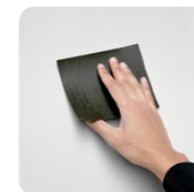


3 Texture Coat

Scrape texture coat randomly to create pattern. Ensure the whole surface area is covered. Then apply second layer.

* Do Not Dilute the material.

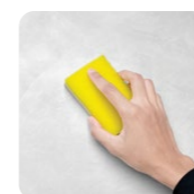
Tool: Stainless Steel Trowel



4 Sanding Optional

Sand surface with sandpaper (600 grit) to ensure a smooth surface.

Tool: 600 Grit Sand Paper

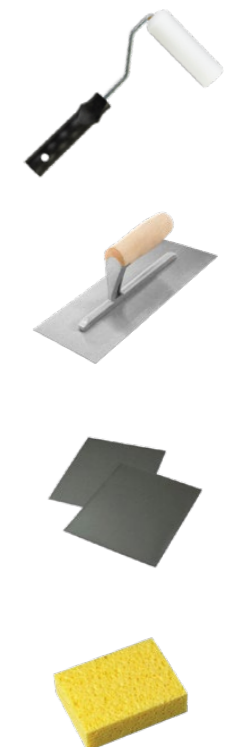


5 Topcoat

Apply SR-Top 1 on entire surface using a dry sponge in circular motions.

IMPORTANT: Use a clean and dry sponge/cleaning cloth to wipe the excess topcoat before it dries to avoid the sponge marks.

Tool: Sponge / Cleaning Cloth



Recommended Tools:
Roller, Stainless Steel Trowel, Sand Paper (600 Grit), Sponge.



PACKING

Packing	Material	Coverage / set (±5%)
2.5L set	1L Primer	6 - 7 sqm (Wall) 5 - 6 sqm (Ceiling)
	1L Texture Coat	
	0.5L Topcoat (SR-Top 1)	

SVL Piccolo Pattern

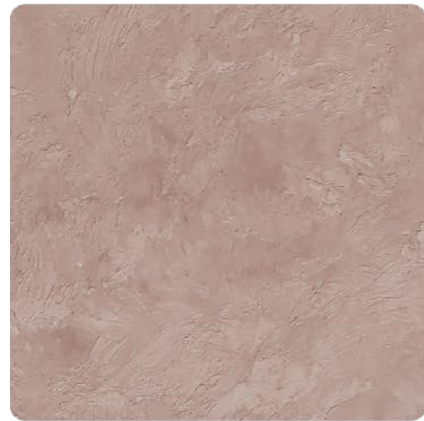
Matte & Smooth
Finishing.



SVL-401 Cloudy Grey



SVL-402 Mushroom Beige



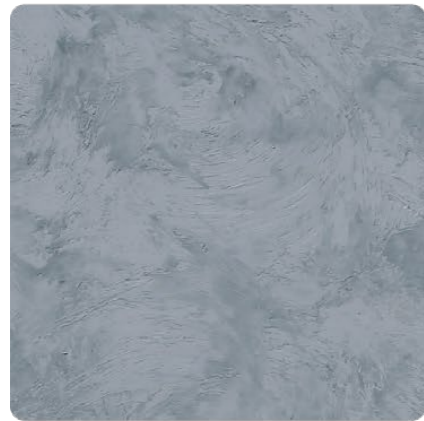
SVL-403 Hazel Wood



SVL-404 Summer Sahara



SVL-405 Walnut Leather



SVL-406 Brocade Blue



SVL-407 Deep Marine



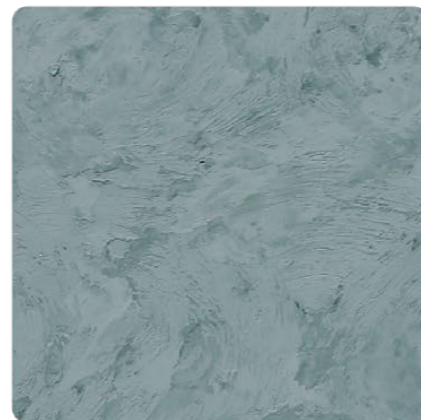
SVL-408 Royal Denim



SVL-409 Violet Memory



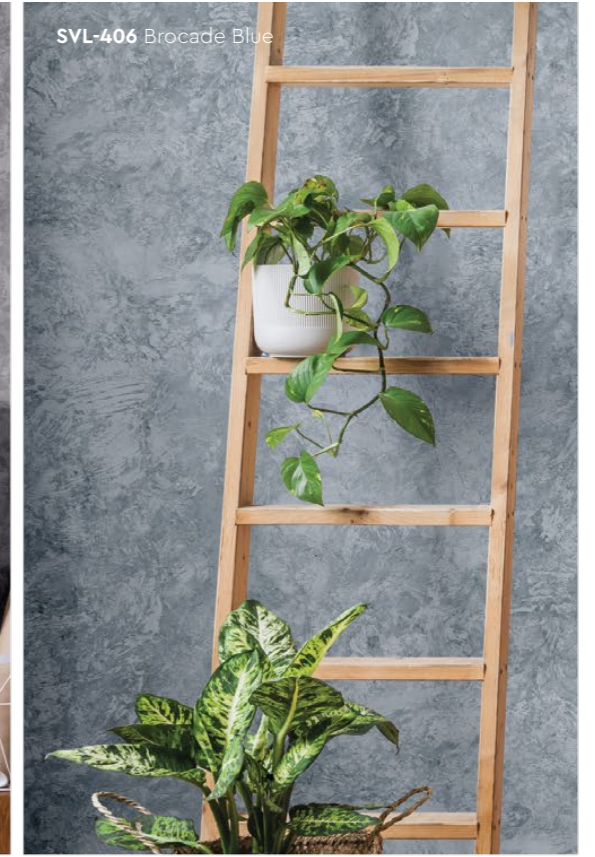
SVL-410 Rosy Mauve



SVL-411 Frosted Mint



SVL-401 Cloudy Grey



SVL-406 Brocade Blue



SVL-402 Mushroom Beige





SVL-414 Herbal Garden



SVL-412 Vivid Emerald



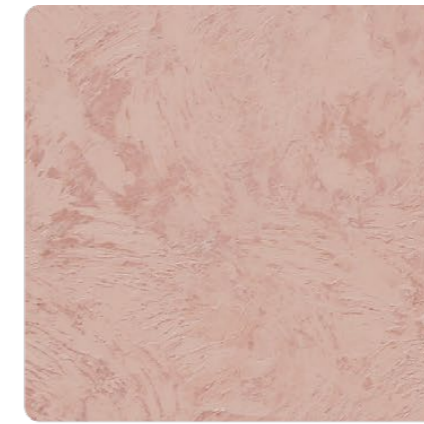
SVL-413 Hunter Green



SVL-414 Herbal Garden



SVL-415 Lime Mist



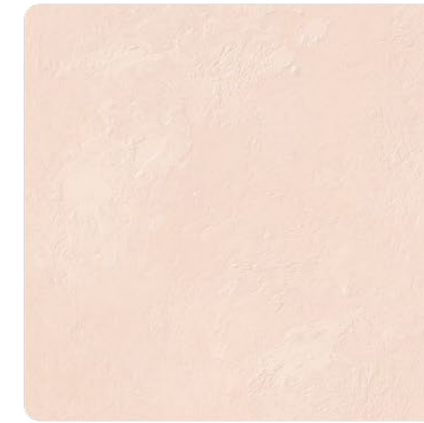
SVL-416 Flamingo Blush



SVL-417 Vanilla Cream



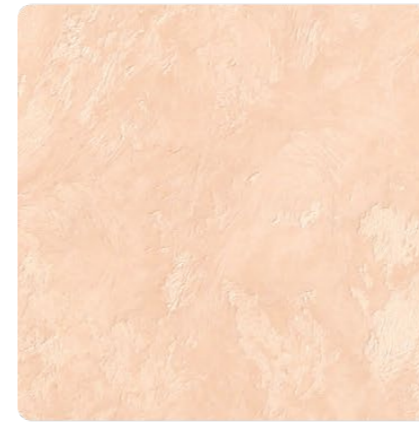
SVL-418 Oat Beige



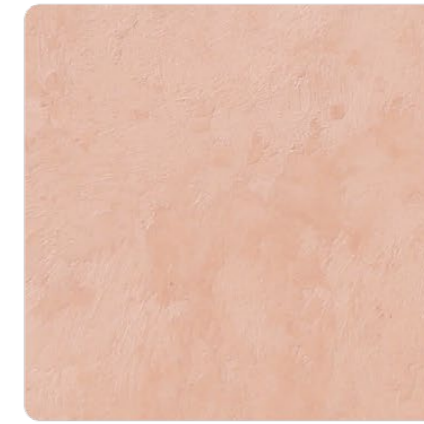
SVL-419 Blush Cream



SVL-420 Wheat Beige



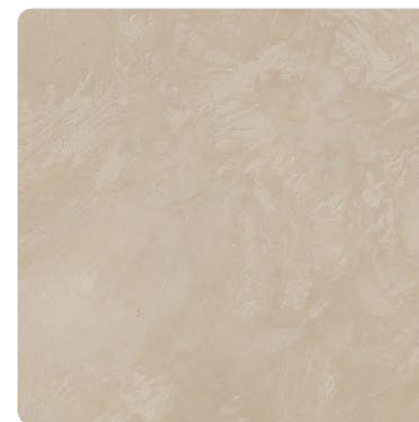
SVL-421 Light Apricot



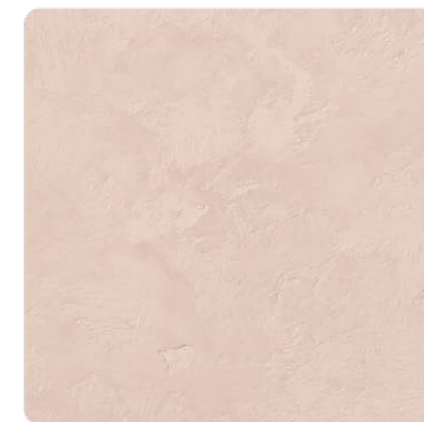
SVL-422 Coral Peach



SVL-423 Lime Citrus



SVL-424 Dried Basil



SVL-425 Mauve Chalk



SVL-426 Dewy Ivory



SVL-425 Mauve Chalk



SVL-420 Wheat Beige



SVL | Piccolo Pattern

Application Instructions

Preparation:

- Surface shall be dry and free from dirt, oil, grease and foreign matters.
- Surface unevenness, cracks or any defects shall be repaired & treated.

IMPORTANT:

Color may vary on application technique & amount of material used.

Dilution Guide:

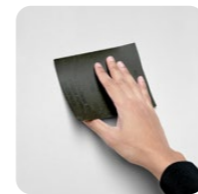
Primer : Max 3% of clean water
Texture : Do not dilute.



1 Primer

Roll 2 layers of primer on the entire surface.
Allow 30 minutes to dry between the layers.
(The primer can be diluted with maximum 3% of clean water)

Tool: Roller



2 Sanding

Sand surface with sandpaper (600 grit) to ensure a smooth surface.

Tool: 600 Grit Sand Paper



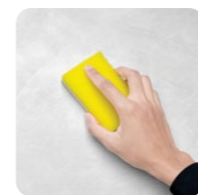
3 Texture Coat

(Do not dilute the texture coat with water or any solvents)

- (1) Scrape texture coat evenly onto the surface using a trowel.
- (2) Use piccolo tool to create swirl texture effects by moving with random circular motion.

Repeat the steps for a **second layer** to enhance the texture effects.

Tool: Stainless Steel Trowel & Piccolo Tool



4 Topcoat

Apply SR-Top 1 on entire surface using a dry sponge in circular motions.

IMPORTANT: Use a clean and dry sponge/cleaning cloth to wipe the excess topcoat before it dries to avoid the sponge marks.

Tool: Sponge / Cleaning Cloth



Recommended Tools:
Roller, Piccolo Tool,
Stainless Steel Trowel,
Sand Paper (600 Grit), Sponge.

SUZUKA® WALL SEALER PRO

“ Make your wall finishes last longer! ”



Superior primer for concrete, skimmed or masonry surfaces.

This sealer that has good substrate penetration abilities to increase adhesion of product to prevent chalking or peeling off. It has excellent alkaline resistance properties that can prevent efflorescence. It is an ideal base coat for any SUZUKA® or any wall finish products.

Packing Size:

1L 5L 20L

Coverage	Drying Time (hour)		
6.5 - 8.5 m ² /l/coat	Surface Dry : 1	Hard Dry : 5	Recoating : 5
	Substrate Temperature: 23°C - 26°C		

Suitable for:

- Masonry wall
- Brickwork
- Plaster
- Skimmed Coat
- Asbestos free substrate

Features:

- Excellent alkaline resistance to prevent efflorescence.
- Good for new walls and repainting.
- Prevents skim coat from chalking & peeling off.
- Extremely good penetration.
- Excellent adhesion.
- Exterior and interior use.
- Applicable with brush, roller or spray gun.

Airless Spray	Nozzle 1.8 - 2.0 mm	Spray Angle Degree 65° - 80°	Pressure 210 psi/150kg/cm ²
---------------	---------------------	------------------------------	----------------------------------------



PACKING

Packing	Material	Coverage / set (±5%)
2.5L set	1L Primer	6 - 7 sqm (Wall) 5 - 6 sqm (Ceiling)
	1L Texture Coat	
	0.5L Topcoat (SR-Top 1)	