

Cnap & Win!
iPad Pro

Check out our contest!
suzuka.com.my/promotion | T&C Apply



SUZUKA® TERRAVA MICROCEMENT



TRV-006



EDITION
1.1

WALL FINISH
PROFESSIONALS.

SINCE
1977

Free
**Product
Training**

For All Industry
Professionals

suzuka.com.my/career-training



suzuka.com.my

suzuka.group **+6012-258 7388**



All images included in this catalog are for visual reference only.
Actual product may have a slight color difference due to variations in printing processes or digital viewing settings. We suggest you examine actual product samples before ordering.



TERRAVA-E1.1-2606

SUZUKA® TERRAVA MICROCEMENT



Terrava Microcement is a seamless canvas of stone and light—quietly strong, effortlessly refined. Its soft minerals and layered tonal depth create a timeless surface that wears beautifully, day after day.

Engineered for modern living—delivering exceptional seamless durability without compromising on design.

TRV-007 & TRV-008



TRV-009

Features



Resistant to Fungus,
Stains, Dust & Dirt



Anti Scratch



Non-toxic



Environmentally
Friendly



For the
Interior



Washable &
Easy to Maintain



Excellent
Adhesion & Elasticity



Excellent Impact &
Abrasion Resistance

• Color customization is available upon request, subject to order quantity.



 All images included in this catalog are for visual reference only.

Actual product may have a slight color difference due to variations in printing processes or digital viewing settings. We suggest you examine actual product samples before ordering.



TRV-001



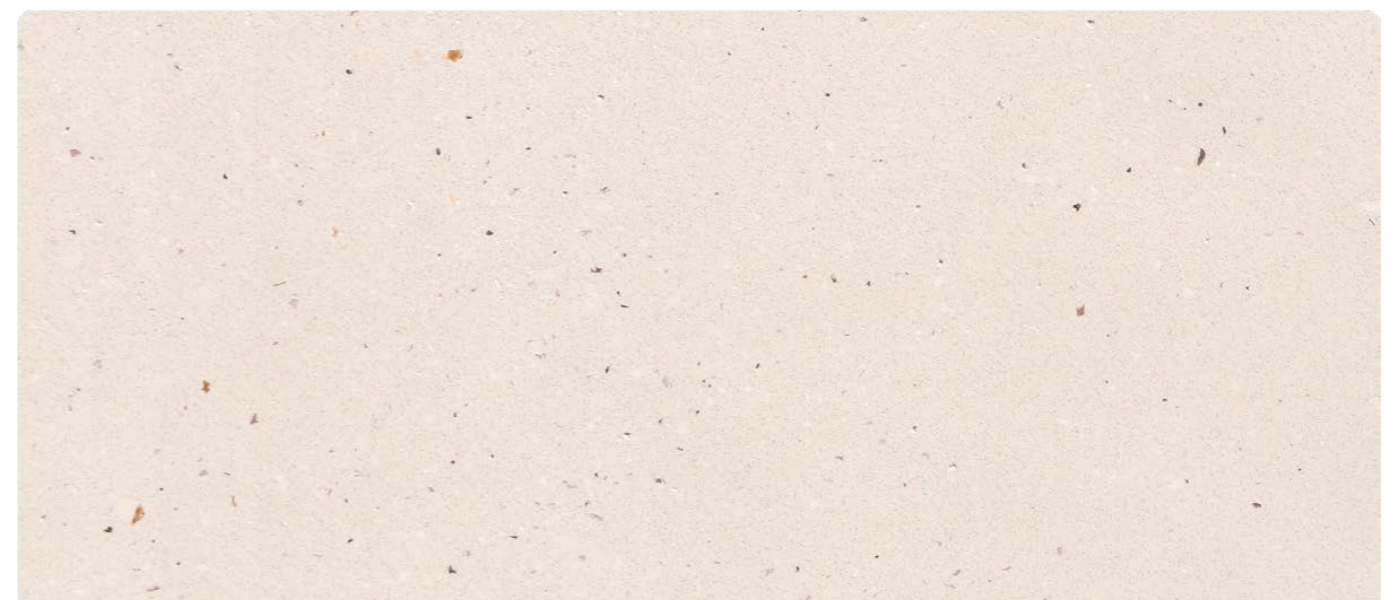
TRV-002



TRV-003



TRV-004

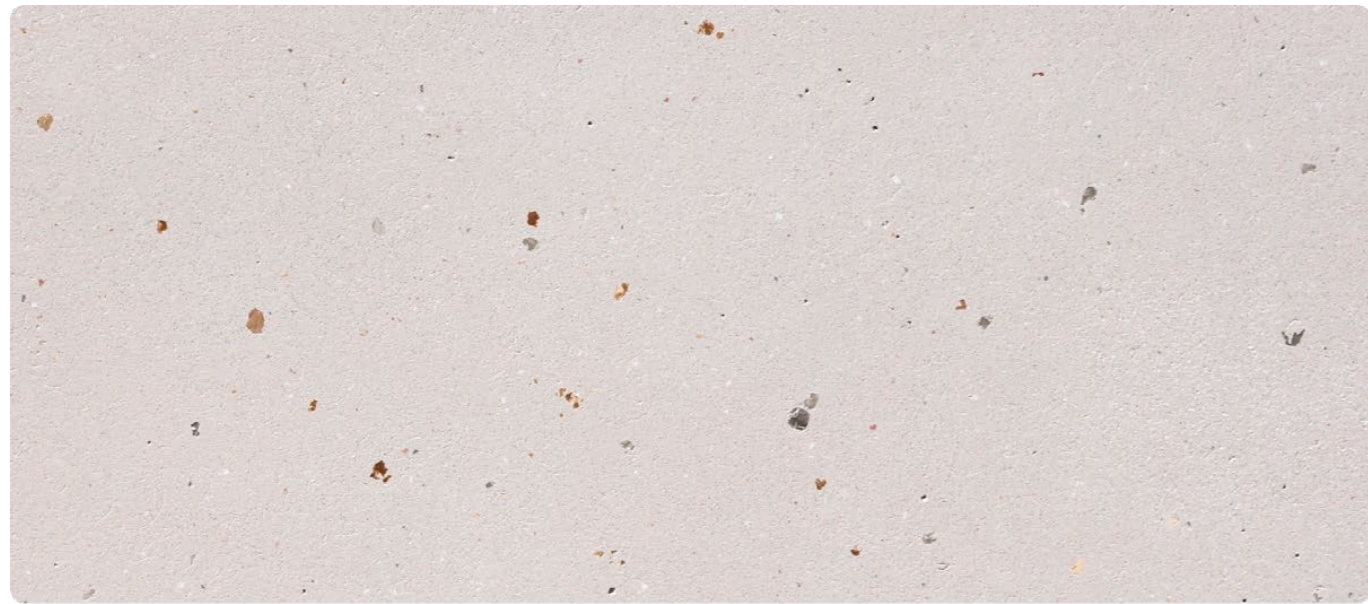


TRV-005

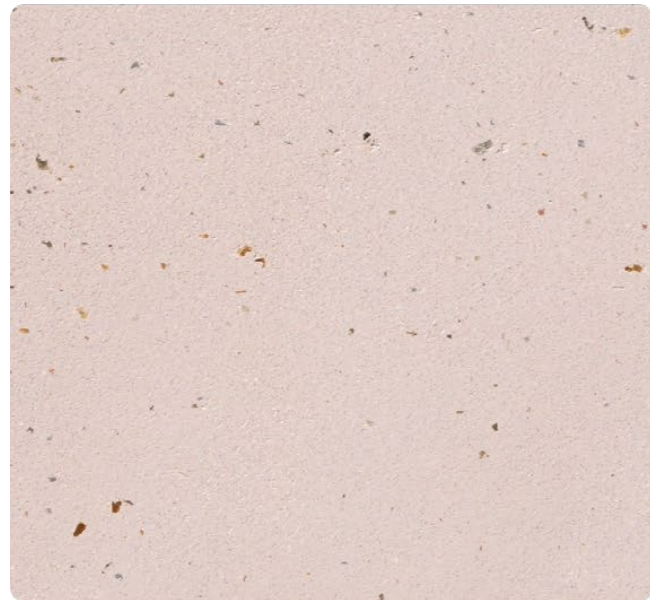
• **Color customization is available upon request, subject to order quantity.**

All images shown are for visual reference only. Please be aware that product colors may appear slightly different in print and on various digital screens.

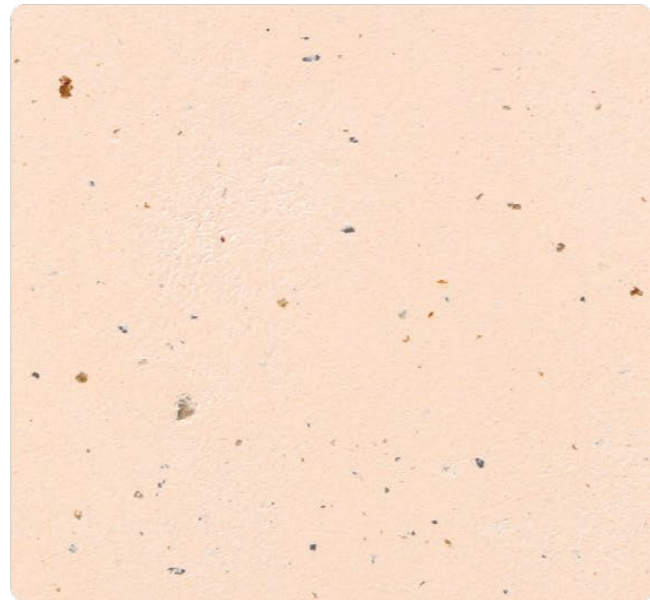




TRV-006



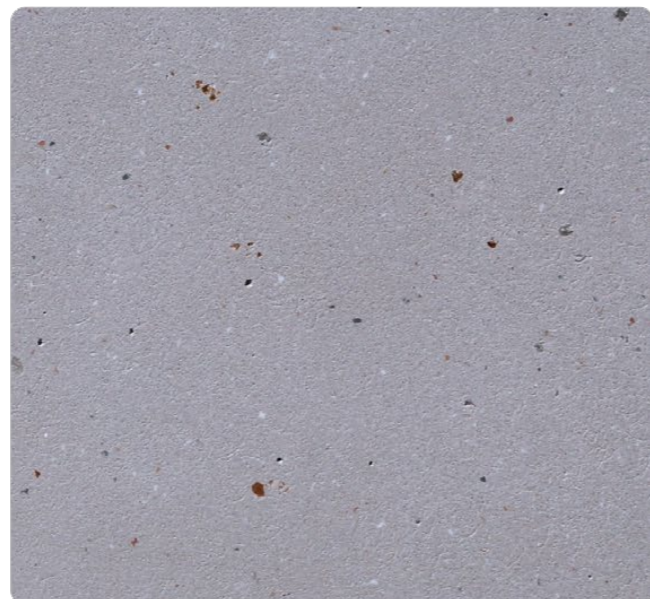
TRV-007



TRV-008



TRV-009



TRV-010

TRV-004



 All images included in this catalog are for visual reference only.

Actual product may have a slight color difference due to variations in printing processes or digital viewing settings. We suggest you examine actual product samples before ordering.

• **Color customization is available upon request, subject to order quantity.**

SUZUKA® TERRAVA Floor Coating System



Substrate

For Non-porous Surface

Adhesion Primer

- Suzuka® AdheX Primer (ADP)

For Porous Surface

Sealer

- Suzuka® Microcement Sealer (MCS)

Fiberglass Mesh

Basecoat - 2 Layers

- Suzuka® Terrava Microcement Basecoat (TRV MC-BC)
- Suzuka® Terrava Microcement Binder (TRV MC-BD)

Facecoat - 2 Layers

- Suzuka® Terrava Microcement Facecoat (TRV MC-FC)
- Suzuka® Terrava Microcement Binder (TRV MC-BD)

Sealer

- Suzuka® Microcement Sealer (MCS)

Topcoat

- Water Base PU Matt (WB-PU-M)

Floor Application Instructions



Surface Preparation

Surface needs to be dry and free from dirt, oil, and foreign matter.
Surface unevenness, including cracks, will need to be treated with cement filler.

Step 1

For Non-porous Surface: Suzuka® AdheX Primer (ADP)

Apply 1 - 2 layers by a short nap microfiber roller or low pressure spray. Ensure the whole surface is covered. Let dry for 2-3 hours.

For Porous Surface: Suzuka® Microcement Sealer (MCS)

Apply 1 layer by a short nap microfiber roller or low pressure spray. Ensure the whole surface is covered. Let dry for 2-3 hours.

Step 2 - Basecoat

Covering Tile Joints

- 1 Apply the first coat of SUZUKA® TRV MC Basecoat diagonally across the surface using a steel trowel, pressing the material firmly into the tile joints.
- 2 Ensure all grout lines and recesses are completely filled and leveled to prevent joint mapping.
- 3 Once dry, apply a second cross-layer to smooth the surface and create an even foundation.

Application on Normal Flat Surfaces (e.g., Concrete, Screeds, Cement Boards)

- 1 Apply the basecoat in thin, even layers with a steel trowel, not exceeding 1mm per layer.
- 2 Use cross strokes to ensure full coverage & mechanical bonding.
- 3 Typically applied in two coats:
1st coat : for substrate leveling and adhesion.
2nd coat : to refine surface uniformity before applying the finishcoat.

Drying & Sanding

- 1 Allow each coat to dry (approx. 12 - 24 hours depending on temperature and humidity).
- 2 Lightly sand between coats to remove imperfections and enhance adhesion of subsequent layers (120 - 140 grit sandpaper).

Step 3 - Facecoat

- 1 Apply using a steel trowel in thin, uniform layers (0.6 mm/layer). Multiple layer may be required to achieve a smooth surface.
- 2 Once cured, sand down the Terrava Microcement Facecoat using 200 - 240 grit sandpaper until the surface is smooth.
- 3 Thoroughly remove all sanding dust and powder from the surface by vacuum.

Step 4 - Sealer

Apply 1 layer by a short nap microfiber roller or low pressure spray. Ensure the whole surface is covered. Let dry for 2-3 hours.

Step 5 - Topcoat

- 1 Apply SUZUKA® WB-PU Topcoat Matt with short-nap microfiber roller as the protective finishing layer to enhance durability, water resistance, & stain protection.
- 2 Stir Part A for 30 seconds using a high-power mixer (750 RPM). Add Part B (hardener) & mix thoroughly for 1 minute.
- 3 If required, add up to 5% clean water and mix for another 1.5 minutes until homogeneous.
- 4 Avoid thick layer on one single coat, preferably 0.11 kg/m² (2 layers)

TECHNICAL SPECIFICATIONS

Material	Packing (mixing ratio)	Number of Coats	Coating Intervals (hrs)	Consumption (±15%)	Tools
Adhesion Primer	1L, 18L	1 - 2	4 hrs	7 - 9 m ² /l/coat	Roller or Spray
Suzuka® AdheX Primer (ADP)	(Dilution: max 5% with water)				
Sealer	0.5L, 1L, 18L	1	3 hrs	10 - 12 m ² /l/coat	Roller or Spray
Suzuka® Microcement Sealer (MCS)	(Dilution: Ready to use)				
Basecoat	(Mixing : 18.5 : 6.5)				
Terrava Microcement Basecoat (TRV MC-BC)	18.5 kg	2	12 hrs	2.24 kg/m ²	Trowel
Terrava Microcement Binder (TRV MC-BD)	6.5 kg			(1 mm)	
Facecoat	(Mixing : 4.7 : 2.0)				
Terrava Microcement Facecoat (TRV MC-FC)	4.7 kg	2	4 hrs	0.6 kg/m ²	Trowel
Terrava Microcement Binder (TRV MC-BD)	2.0 kg			(0.6 mm)	
Topcoat	(Mixing : 4 : 1)				
Water Base PU Matt Part A (WB-PU-M-A)	0.8 kg	2	12 hrs	0.11 kg/m ² (50 µm)	Roller or Spray
Water Base PU Matt Part B (WB-PU-M-B)	0.2 kg			2 coats	

* For more details, please request to see the Technical Data Sheet (TDS).

Suzuka® Terrava - Floor Packing Set

Material	DRY / WET AREAS			
	Porous Surface		Non-Porous Surface	
	Set	Coverage	Set	Coverage
Suzuka® AdheX Primer	-	-	✓ 1 L	7.0 - 9.0 sqm
Suzuka® Microcement Sealer	✓ 1 L	10.0 - 11.0 sqm	✓ 0.5 L	5.0 - 5.5 sqm
Suzuka® Terrava Microcement Basecoat	✓ 25 kg	5.0 - 5.5 sqm	✓ 25 kg	5.0 - 5.5 sqm
Suzuka® Terrava Microcement Facecoat	✓ 6.7 kg	5.0 - 5.5 sqm	✓ 6.7 kg	5.0 - 5.5 sqm
Water Base PU Matt Topcoat	✓ 1 kg	8.0 - 9.0 sqm	✓ 1 kg	8.0 - 9.0 sqm

SUZUKA® TERRAVA Wall Coating System

TRV-007



Substrate

For Non-porous Surface

Adhesion Primer

- Suzuka® AdheX Primer (ADP)

For Porous Surface

EM Primer

- Suzuka® EM Primer (EMP)

Basecoat For Tiled Walls & Wet Areas

- For **tiled/uneven walls & wet areas**, basecoat is required before applying the facecoat.

Facecoat - 2 Layers

- Suzuka® Terrava Microcement Facecoat (TRV MC-FC)
- Suzuka® Terrava Microcement Binder (TRV MC-BD)

Sealer For Wet Area

- For application in **wet areas**, Microcement Sealer (MCS) is required before applying the topcoat.

Topcoat

General / Dry Area

- Suzuka® FSI Clear

Wet Area

- Water Base PU Matt (WB-PU-M)

Suzuka® Terrava – Wall Packing Set

Material	DRY AREAS			WET AREAS		Set	Coverage
	Porous	Non-Porous Uneven*	Non-Porous Flat**	Porous	Non Porous		
Suzuka® AdheX Primer		✓	✓		✓	1 L	7.0 - 9.0 sqm
Suzuka® EM Primer	✓			✓		1 L	7.0 - 9.0 sqm
Suzuka® Terrava Microcement Basecoat		✓		✓	✓	25 kg	5.0 - 5.5 sqm
Suzuka® Terrava Microcement Facecoat	✓	✓	✓	✓	✓	6.7 kg	5.0 - 5.5 sqm
Suzuka® Microcement Sealer				✓	✓	0.5 L	5.0 - 5.5 sqm
Suzuka® FSI Clear	✓	✓	✓			0.5 L	5.0 - 6.0 sqm
Water Base PU Matt Topcoat				✓	✓	1 kg	8.0 - 9.0 sqm

* Non-porous uneven i.e. tiled floor, grout joints. ** Non-porous - flat i.e. laminated, solid surface.

Wall Application Instructions



Surface Preparation

Surface needs to be dry and free from dirt, oil, and foreign matter.
Surface unevenness, including cracks, will need to be treated with cement filler.

Step 1

For Non-porous Surface: Suzuka® AdheX Primer (ADP)

Apply 1 - 2 layers by a short nap microfiber roller or low pressure spray. Ensure the whole surface is covered. Let dry for 2-3 hours.

For Porous Surface: Suzuka® EM Primer (EMP)

Apply 1 layer by a short nap microfiber roller or low pressure spray. Ensure the whole surface is covered. Let dry for 2-3 hours.

Step 2 – Facecoat

! For **tiled/uneven walls & wet areas**, basecoat is required before applying the facecoat.

- 1 Apply using a steel trowel in thin, uniform layers (0.6mm/layer). Multiple layer may be required to achieve a smooth surface.
- 2 Once cured, sand down the Terrava Microcement Facecoat using 200 - 240 grit sandpaper until the surface is smooth.
- 3 Thoroughly remove all sanding dust and powder from the surface by vacuum.

! For application in **wet areas**, microcement sealer is required before applying the topcoat.

Step 3 – Topcoat

Suzuka® WB-PU Topcoat Matt (For Wet Area)

- 1 Using a short-nap microfiber roller, apply Suzuka® WB-PU Topcoat Matt, as the protective finishing layer to enhance durability, water resistance, & stain protection.
- 2 Stir Part A for 30 seconds using a high-power mixer (750 RPM). Add Part B (hardener) & mix thoroughly for 1 minute.
- 3 If required, add up to 5% clean water & mix for another 1.5 minutes until homogeneous.
- 4 Avoid thick layer on one single coat, preferably 0.11 kg/m² (2 layers).

Suzuka® FSI Clear (For General / Dry Area)

- 1 Apply FSI Clear with a short-nap microfiber roller, as the protective finishing layer to enhance durability of the coating.

TECHNICAL SPECIFICATIONS

Material	Packing (mixing ratio)	Number of Coats	Coating Intervals (hrs)	Consumption (±15%)	Tools
Adhesion Primer	1L, 18L	1 - 2	4 hrs	7 - 9 m ² /l/coat	Roller or Spray
Suzuka® AdheX Primer (ADP)	(Dilution: max 5% with water)				
EM Primer	1L, 18L	1 - 2	4 hrs	7 - 9 m ² /l/coat	Roller or Spray
Suzuka® EM Primer (EMP)	(Dilution: max 5% with water)				
Basecoat	(Mixing : 18.5 : 6.5)				
Terrava Microcement Basecoat (TRV MC-BC)	18.5 kg	2	12 hrs	2.24 kg/m ²	Trowel
Terrava Microcement Binder (TRV MC-BD)	6.5 kg			(1 mm)	
Facecoat	(Mixing : 4.7 : 2.0)				
Terrava Microcement Facecoat (TRV MC-FC)	4.7 kg	2	4 hrs	0.6 kg/m ²	Trowel
Terrava Microcement Binder (TRV MC-BD)	2.0 kg			(0.6 mm)	
Sealer	0.5L, 1L, 18L	1	3 hrs	10 - 12 m ² /l/coat	Roller or Spray
Suzuka® Microcement Sealer (MCS)	(Dilution: Ready to use)				
Topcoat	(Mixing : 4 : 1)				
Water Base PU Matt Part A (WB-PU-M-A)	0.8 kg	2	12 hrs	0.11 kg/m ² (50 μm)	Roller or Spray
Water Base PU Matt Part B (WB-PU-M-B)	0.2 kg			2 coats	
Suzuka® FSI Clear (FSI-Clear)	0.5 L	1	4 hrs	8 - 10 m ² /l/coat	Roller or Spray

* For more details, please request to see the Technical Data Sheet (TDS).